



COLUMNISTS

The Instructor

Mark Dvoretsky



Irrational Complications

Quinteros - Fischer Buenos Aires 1970

This game was commented upon (quite superficially) by Herman Pilnik (in 64) and by Petar Trifunovic (in *Informant* #10). A few years later, Adrian Mikhalchisin published a more serious analysis of its short critical stage (in *Shakhmaty v SSSR* 12/77); but this, too, was far from perfect - which should be no surprise, since the game was clearly out of control of both players; the outcome had become totally unpredictable. In the end, as they say, the stronger player won; but objectively speaking, the outcome could also have been reversed.

1. c4 g6 2. Nc3 Bg7 3. Nf3 c5 4. d4?! cd 5. Nxd4 Nc6 6. Nc2 Bxc3+! 7. bc Nf6 8. f3 d6?!

8...Qa5! was more exact, in order to force 9. Bd2.

9. e4 Be6

9...Nd7 10. Be2 Nc5 11. Bh6 f6 12. 0-0 Be6 13. Nb4 Qd7 14. Nd5+/- was Quinteros-Hartston, London 1977.

10. Be2 (10 Bh6!+/-) **10...Rc8 11. Ne3 Qa5 12. Bd2 Ne5 13. Qb3 Nfd7! 14. f4** (14. Qxb7? Rb8-+) **14...Nc5 15. Qc2** (15. Qb5+ Nc6!-/+) **15...Nc6 16. 0-0 Qa4! 17. Qb1**

17. Qxa4 Nxa4 18. Rab1 Na5 (18...Nc5!?) 19. f5! (19. Rb4 Nb6!-+ Trifunovic) 19...Bd7=/+.

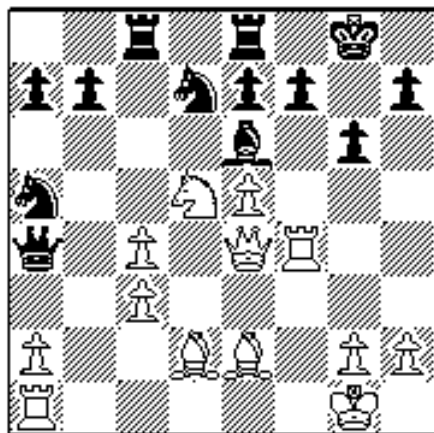
17...Na5 18. e5 de 19. fe 0-0

19...Nxc4 20. Nxc4 Bxc4 21. Rf4 b5 22. Bxc4 bc 23. Qf1! 0-0 24. Rxc4 Qd7 25. Bh6 - Trifunovic.

20. Rf4 Nd7?!

20...Qd7!, intending ..Qc7 - Trifunovic.

21. Nd5! Rfe8 22. Qe4 (*See Diagram*)

**22...b5?!**

Fischer either overlooks or underestimates the rook sacrifice that follows.

22...Nf8 23. Rh4 b5 24. Bg5! Bxd5 25. cd Qxe4 26. Rxe4 a6+/- (Mikhalcisin)

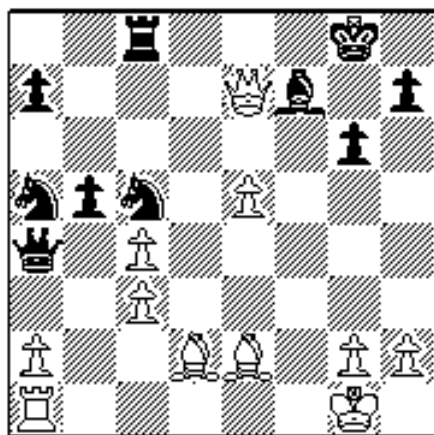
22...Nb3!? 23. Bd1 (23. Qc2 Nbc5-/+; 23. Rd1 Qxa2) 23...Nxd2 24. Bxa4 Nxe4 25. Rxe4 Bxd5 26. cd Red8= /+.

23. Rxf7!!

What choice does Black have here?

Taking the rook with the Bishop is bad: 23...Bxf7? 24. e6 Nf6 25. Nxf6+ ef 26. ef+ Kxf7 27. Qd5+ Kg7 28. Qd7+ Kh8 29. Bh6 Rg8 30. Bg7+ (30. Qf7 Rc6 31. Bf3+- [Dvoretsky]) 30...Rxc8 31. Qxc8+ Rg8 32. Qe6+- (Trifunovic).

Fischer's actual choice was to recapture with the King. However, another line deserving serious consideration was 23...Nc5! 24. Qh4 Bxf7 25. Nxe7+ Rxe7 26. Qxe7 (See Diagram)



Here, 26...Bxc4? is hopeless: 27. Bh6 Bf7 28. Rf1+- (Mikhalcisin).

And 26...Nxc4?! 27. Rf1 Nxe5 (forced) 28. Qxe5 Qe4 29. Qf6+/- is dubious also.

Mikhalcisin considers Black's best (in fact, his only correct) continuation to be 26...bc, with the idea of returning the Queen to the defense by way of the a4-e8 diagonal.

Let's consider White's alternatives here.

A) 27. Bh6 Qe8!?

(27...Qd7? is a mistake: after 28. Qxd7 Nxd7 29. Bg4! Nb6, White wins either by 30. e6 Be8 31. Rf1 Bc6 32. e7+- [Mikhalcisin], or with 30. Bxc8 Nxc8 31. Rf1, with 32. e6 to follow. Worth serious consideration, however, is 27...Qc6!? 28. Rf1 [28. Bg4 Re8 29. Qxa7 Nab7] 28...Qe6 29. Qxa7 Nab7-/+.)

28. Qf6 Ne6 29. Bg4 Qd8! (29...Rc7? 30 Rf1+- intending Bxe6) 30. Qxe6! Bxe6 31. Bxe6+ Kh8 32. Bxc8 Qxc8 (32...Qh4? 33. Be3 Nc6 34. Bb7+/-) 33. Rf1 Kg8 34. e6! Qc5+! 35. Kh1 Nc6 36. Rf7. Mikhalchishin. who found this pretty variation, called it a draw, in view of 36...Ne5 37. Rg7+ Kh8 38. Rf7! =. In fact, Black has every reason to fight on with 36...Qd6!? 37. h3 a5 38. Rg7+ (38. Kg1 a4 39. Kh1 Qd8 40. Rg7+ Kh8 41. Rf7 Qd1+ 42. Kh2

Qd6+ 43. Kh1 Ne7-/+ 38...Kh8 39. Rf7 Ne7 40. Bg5 Nf5 41. e7 Qd1+ 42. Kh2 Nxe7-/+.

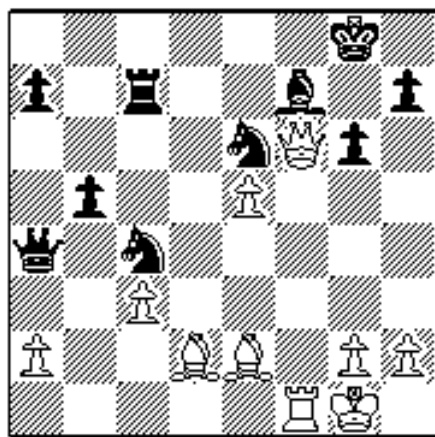
B) 27 Be3. 27...Ne6 leads to an unclear game after 28. Qxa7 Qb5 29. Rf1 Nb7!? (intending Nbd8) 30. a4 (30. Bg4 Re8 31. a4 Qxe5!? 32. Rxf7 Kxf7 33. Qxb7+ Kg8-/+ 30...Qb2 31. Bg4 Re8 (31..Nbd8? 32. Bxe6! Bxe6 33. Qe7+-) 32. Bh6 -unclear.

Black uses tactical means to secure an advantage: 27...Re8! 28. Qxc5 Nb3, or 28. Qxa7 Nd7-/+.

C) 27. Bg4!? Mikhailchishin believes that this is how White refutes his opponent's idea, beginning with 23...Nc5. His variation runs: 27...Qe8 28. Qxa7 Ra8 29. Qxc5 Nb3 30. Qd6 Nxa1 (30..Rd8 31. Qf6) 31. e6! Rd8 32. ef+ Kxf7 33. Bxe6+ (33. Qc7+!? Kf6 34. h4+/- is also strong [Dvoretsky]) 33...Qxe6 34. Qxd8+/-.

Here, Black should exploit the idea we already discovered in the 27. Be3 variation: 27...Re8! 28. Qxc5 (28. Qxa7 Rxe5) 28...Nb3 29. Qd6 Nxa1 30. e6 Qb5! 31. ef+ Kxf7 32. Bd7! Qb1+ (the minor-piece endgame after 32...Qb6+? is hopeless: 33. Qxb6 ab 34. Bxe8+ Kxe8 35. Be3!? b5 36. Kf2 Nc2 37. Bc5 Kd7 38. Ke2 Kc6 38. Bf8+-) 33. Kf2 Re7 33...Rf8 34. Bh6 Qc2+ 35. Kf3) 34. Qf4+ Kg7 35. Qd4+ Kg8 36. Qxc4+ Kh8! (36...Kg7? 37.Bh6+!; 36..Rf7+? 37. Kg3) 37. Qd4+ Kg8. Black's position looks suspect; but I see no direct route to victory for White.

We have not examined one other possibility for Black, namely: 26...Ne6! White should not continue 27. cb Nc4 28. Rf1 Rc7 29. Qh4 Qxb5-+, but play 27. Rf1 instead. Mikhailchishin continued this line 27...Rf8? 28. Bh6 Nc6 29. Qxe6+-, but Black has better: 27...Rc7! 28. Qf6 Nxc4 (*See Diagram*)



And now, we must evaluate the consequences of 29. Bg4.

The combination beginning with 29. Bg4 leads - by force - to a pawn endgame!

29...Nxd2 (29..Qa6? 30. Bh6+-) 30. Bxe6 Nxf1 31. Qd8+ Kg7 32. Qxc7 (32. Qf6+? Kh6) Qf4 33. Qxf7+ Qxf7 34. Bxf7 Kxf7 35. Kxf1 Ke6 36. Ke2 Kxe5. White's queenside pawns are vulnerable, and Black has the more active king. These factors appear to be enough to win, for instance: 37. Ke3 g5! 38. Kd3 Kd5; and

now White has two equally dismal choices:

The waiting 39. Ke3 Kc4 40. Kd2 b4 41. cb Kxb4 42. Kc2 Ka3 43. Kb1 h5 44. Ka1 h4 45. h3 Kb4 46. Kb2 Kc4 47. Kc2 Kd4 48. Kd2 a5! (White's in zugzwang); and

The more active 39. g4 Kc5 40. Kd2 Kc4 41. Kc2 b4 42. cb Kxb4 43. h3 (with the pawn on h2, the race beginning with 43. Kb2 Kc4 44. Ka3 ends in Black's favor after 44...Kd4 45. Kb4 Ke4 46. Kb5 Kf4 47. Ka6 Kxg4 48.

Kxa7 Kh3 49. a4 Kxh2 50. a5 g4 51. a6 g3, and the king has no good way to leave a7) 43...Kc4 44. Kd2 (44. Kb2 Kd3, when White starts the race a tempo behind where he was in the last note) 44...Kd4, and the zugzwang is decisive.

Instead of 29. Bg4?, White must play 29. Bh6! Qa3! 30. Bg4 Qc5+ 31. Kh1 (or 31. Rf2 Rd7!?) 32. h3 Qxe5 33. Qxe5 Nxe5 34. Bxe6) 31...Qxe5 32. Qxe6 Qxe6 33. Bxe6=.

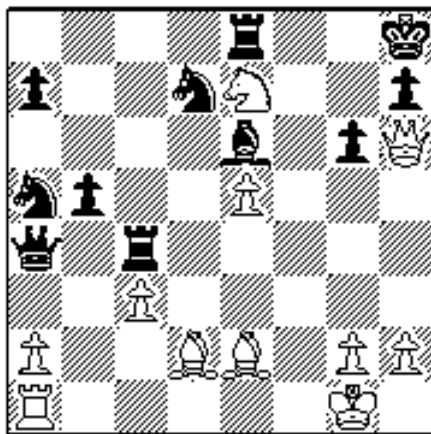
Conclusion: 26...Ne6! is the safest move. 23...Nc5! is also possible. Later on, we shall also discover why it was the best.

23...Kxf7?! 24. Qh4 Kg7

Of course not 24...Bxd5? 25. Qxh7+ Ke6 26. Qxg6+ Kxe5 (26..Nf6 27. ef+-) 27. Bf4+! Kxf4 28. Rf1+ Ke5 29. Qg3+ Ke6 30. Bg4#.

25. Nxe7

Here, Black loses after 25...Nc6 26. Bh6+ Kh8 27. Nxc8 Rxc8 28. Rd1! g5 29. Qf2 (simpler is 29. Bxg5! Ncxe5 30. Bf6+ +-) 29...Ncxe5 (no better, though tougher, is 29...Ncb8 30. Rd6 Rc6 31. Bxg5+-) 30. Rxd7 Nxd7 31. Qd4+ +- (Mikhalchishin). However, worth consideration is Pilnik's try, 25...Rxc4!? 26. Qh6+ Kh8 (*See Diagram*)



27. Nxc8

As Mikhalchishin notes, 27. Bxc4? is bad, because of Qxc4 intending 28...Qc5+; or 27. Rf1? Rxe7! 28. Rf8+ Bg8)

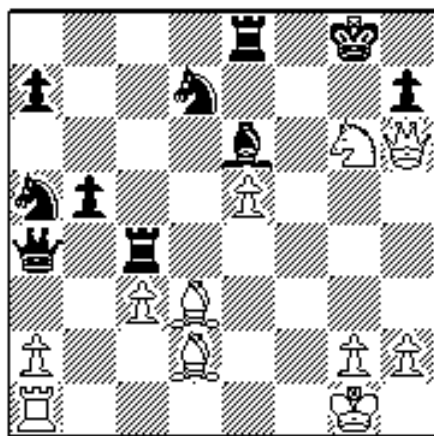
27...Kg8

Here Pilnik only looks at 28. Qg5 Rg4 29. Ne7+ Kh8-+.

But 28. Qg5? is the culprit. 28. Bd1?! isn't much better, owing to 28...Qa3 29.

Qg5 Bf7! (Mikhalchishin's 29...Qc5+ 30. Be3 Qxe3+ 31. Qxe3 hg is unconvincing) 30. e6 Rxe6 31. Nf4+ Rg6 32. Nxc6 hg-/+.

Stronger is 28. Bd3! (*See Diagram*)



How does Black defend?

A) 28...Nc6? 29. Nf4 Nf8 30. Nh5 Re7 31. Rf1+- (Mikhalchishin);

B) 28...Rc6?! 29. Nf4 (29. Rf1) 29...Re7 (29...Bf5 30. e6 Bxd3 31. ed+-) 30. Rf1, with attack;

C) 28...Rg4?! 29. Nf4 Nf8 (29..Rg7 30. Nxe6 Rxc2+ 31. Kxc2 [one could also use Mikhalchishin's 31. Kh1+-] 31...Qg4+ 32. Kf2 Rxe6 33. Qxh7+ Kf8 34. Rg1+-) Mikhalchishin continues 30.

Nxe6 Rxe6 31. Bxh7+ Kh8? 32. Qxf8+ Kxh7 33. Qf7+ +-, but Black can defend better: 31...Nxb7 32. Qxe6+ Kh8 is unclear.

Instead of 30. Nxe6, White should play 30. Nh5! Rxc2+ 31. Kxc2 Qg4+ 32. Kf2 Qh4+ 33. Kg1 Qg4+ 34. Ng3 Nc4 35. Rf1+/-.

D) 28...Rc7 29. Rf1! Nc6 (29...Bc4 30. Ne7+! Rxe7 31. Qg5+ Kh8 32. Qxe7+- [Dvoretzky]; 29...Nc4 30. Ne7+! Rxe7 31. Bxh7+ Rxh7 32. Qxe6+ Kh8 33. Qe8+-; 29...Qg4 30. h3! Qg3 31. Rf3+-) 30. Nf4 Nf8 31. Nxe6 Nxe6 32. Bxh7+! Rxh7 33. Qg6+ Ng7 34. Qf7+ Kh8 35. Qf8+! Rxf8 36. Rxf8# (Mikhalchisin).

One might get the impression that Black's in a bad way here. However, there is one more defensive try, which was discovered by Zvjagintsev.

E) 28...Rd4!! 29. Nf4! (29. Bxb5 Qxb5 30. cd Qd3+-) 29...Rxd3 30. Qg5+ Kh8 31. Ng6+! =

Now it's White's turn to strengthen the attack, and we can do so by avoiding the obvious 27. Nxc6+?! in favor of 27. Bg5! (intending Bf6+).

A) 27...Rxc3 28. Rd1! (but not 28. Bf6+? Nxf6 29. ef Qd4+). Mikhalchisin believes, correctly, that Black has no good defense to the threatened 29. Rxd7. For instance, 28...Rxe7 29. Rxd7 (also strong is 29. Bxe7 Qe4 30. Rxd7 Rc1+ 31. Qxc1 Bxd7 32. Bf6+ Kg8 33. Qd2+-) 29...Rc1+ 30. Kf2+-; or 28...Qb4 29. Bf6+ (29. Rxd7? Rc1+ 30. Bxc1 Bxd7=) 29...Nxf6 30. ef+-.

B) 27...Rc7 28. Rd1!, with the same deadly threat of 29. Rxd7.

C) 27...Rxe7 28. Bxe7 Rf4!? (28...Kg8? 29. Bd1!+-; 28...Qc2? 29. Bf8!+-; 28...Rc8 29. Rd1 b4 30. Bf6+ Nxf6 31. ef Rc7 32. Rd8+ Bg8 33. Qf8 Qxa2 34. c4!+-) 29. Bxb5! Qxb5 (29...Qe4 30. Bxd7 Qe3+ 31. Kh1 Rf1+ 32. Rxf1 Qxh6 33. Bxe6+-) 30. Qxf4+/- (analysis by Mikhalchisin).

25...Qc2

This is the critical moment of the game. How does White continue the attack?

Trifunovic suggested 26. Nxc8 Qxd2 (26...Rxc8 27. Qe7+ Kh8 28. Bh6 Rg8 29. Qxe6 Qxe2 30. Qxd7+-) 27. Nd6, stating that White has the advantage.

As Mikhalcisin points out, this is wrong: 27...Rf8 28. Qe7+ Kh8 29. Qxe6 Qe3+ 30. Kh1 Qxe2-+.

A stronger line is 26. Bh6+ Kh8, and now let us look at the complications once again.

A) After 27. Bd1, Mikhalchishin has two replies, 27...Qd3 and 27...Rxc4. But, first of all, it's too early to stop analyzing here - the consequences are far from clear; and second, Black has a third try, 27...Qxc3.

27...Qd3 28. Nxc8 Rxc8 29. Qe7 Rg8 30. Qxe6 Qxc3 (Mikhalchishin stops here) 31. h3 Qxa1 32. Qxd7 Qxe5 33. cb is unclear;

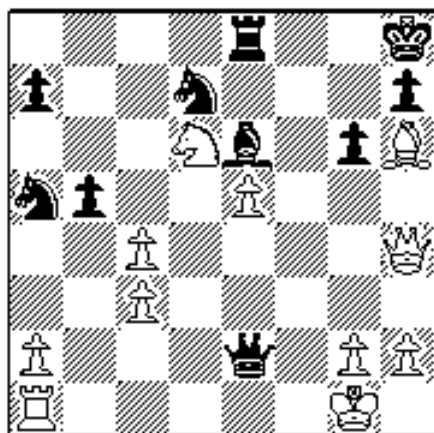
27...Qxc3!? 28. Nxc6+ (28. Rc1 Qd3 29. Nxc8 Rxc8 30. Qe7 Qd4+ 31. Kh1 Qxe5-+) 28...Kg8 29. Rc1 Qxc1 (29...Qa3? 30 Qg5+-; 29...Qd3!? 30. Ne7+ Rxe7 31. Qxe7 Qg6 32. cb Nc4 [32...Rxc1 33. Bxc1 is unclear] 33. Qh4 Ndx5 34. Rc3 is unclear) 30. Ne7+! (30. Bxc1 hg 31. Qg5 Bf7-+) 30...Rxe7 31. Bxc1 Rce8 (31...Rf7 32. Bh5; 31...Rg7 32. Bh6 Rg6 33. Bc2) 32. Bh5 Nxc4 33. Bh6 Nxe5 34. Qg5+ Ng6 35. Bxg6 hg 36. Qxg6+ Kh8 37. Bg7+ Rxg7 38. Qxe8+ Bg8 39. Qh5+ Rh7 40. Qxb5 - unclear; 27...Rxc4!? 28. Qf6+! Nxf6 29. ef Rxe7 30. fe Qxc3 31. e8Q+ Bg8=/+.

B) After 27. Rd1, Black also faces a difficult choice:

27...Qxe2 28. Rxd7 Rxe7 29. Rxe7 (29 Qf6+ Kg8 30. Rxe7 Qe1+ 31. Qf1 Qxf1+ 32. Kxf1 Bxc4+ 33. Kf2 Nc6 34. Rg7+ Kh8 35. Rb7 Re8-+) 29...Qd1+ 30. Kf2 Qc2+ 31. Kg1 Qb1+ 33. Kf2 Qf5+ 33. Bf4= Bg8?! 34. Qf6+ Qxf6 35 ef+/-;

27...Rxc4!? 28. Qf2 Qxd1+! 29. Bxd1 Rxe7 30. Qxa7 Nc6 31. Qa8+ - this is somewhere between unclear and -/+.

C) 27. Nxc8! Qxe2 (27...Rxc8 28. Qe7!) 28. Nd6! (*See Diagram*)

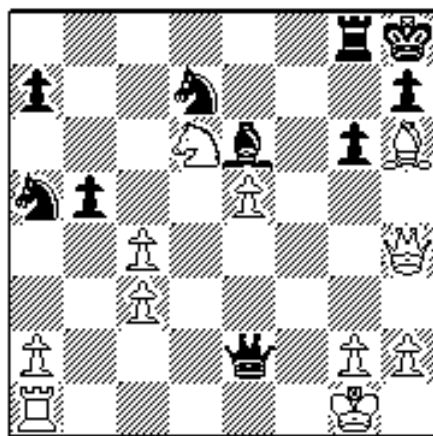


These moves were given by Pilnik, who said that White was winning after 28...g5 29. Bxg5 Rg8 30. Bf6+ Nxf6 31. Qxf6+ Rg7 32. g3 Bg8? 33. Nf5+-.

Mikhalchishin correctly demonstrated that firstly, Black gets a draw in this line by replacing his unfortunate 32nd move with 32...Nxc4 33. Qxe6 Qe3+ 34. Kg2 Qe2+, - perpetual check. (The incautious 35. Kh3?? runs into the deadly 35...Ne3!-+).

And secondly, instead of 29. Bxg5?, 29. Bg7+! is much stronger: 29...Kxg7 (29...Kg8 30 Qxg5+-) 30. Qxg5+ Kh8 (30..Kf8 31. Rf1+ Qxf1+ 32. Kxf1+/-) 31. Nxe8 Qxe5 32. Qxe5+ Nxe5 33. cb+/-.

And on 28...Rg8, White has two good ways to continue the attack. (*See Diagram*)

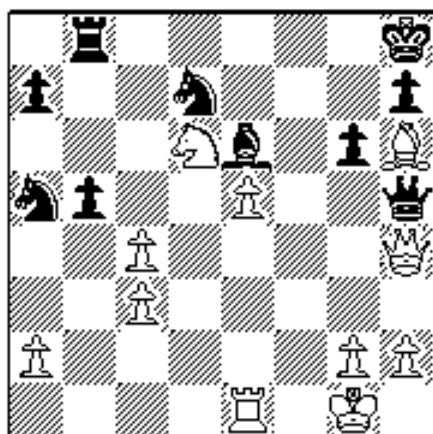


29. Qe7!? Qxe5 30. Qxd7 Qxc3 31. Rf1 Bxc4 (31...Nxc4 32. Kh1!+-), and now the simplest is 32. Bg5+-, although Mikhalcisin's suggested 32. Nf7+ Bxf7 33. Qxf7 (intending Qxg8+) is also sufficient, e.g.: 33...Qd4+ 34. Kh1 Qd8 35. Re1!+-.

Instead of 30...Qxc3, Black can also try 30...Nxc4!?!; but here too, his prospects are not good: 31. Nf7+ Bxf7 32. Qxf7 Qxc3 33. Rf1 (intending Qxg8+) Qd4+ 34. Kh1 Qd8 (34...Qd6 35. Bg5+-) 35. Qxa7 Qh4 36. Bf8! (intending 37. Be7+-).

29. Re1!? Qh5 30. Qe7 Qxh6 31. Qxe6 Qd2 32. Rf1 Qe3+ 33. Kh1 Qd3 34. Rg1 Nxc4 35. Qxd7 (35. Nf7+ Kg7 36. Qe7+-) Nxd6 36. ed+-.

Mikhalcisin believes Black's best line is 28...Rb8 29. Re1! (29. Qe7? Qxe5 30. Qxd7 Qc5+) 29...Qh5 (29...Qg4 30. Qe7 Rg8 31. Qxd7+-) (*See Diagram*)



Here, the simplest solution was one Mikhalcisin didn't find: 30. Bg7+! Kxg7 31. Qe7+ Kh8 32. Qxe6+. But his line is also strong: 30. Qe7 Qxh6 31. Qxe6 Qg7 (31...Qd2 32. Rf1 Qe3+ 33. Kh1 Qe2 34. Rg1 Nf8 [34...Rf8 35. Qxd7+-] 35. Qf6+ Kg8 36. Qf7+ Kh8 37. Qc7+-) 32. cb!+- / +-.

Quinteros failed to find the right path, and lost the game practically in one move, which allowed his opponent to give up his queen for rook and bishop, with a decisive

advantage.

26. Qh6+? Kh8 27. Rc1 Qxc1+! 28. Bxc1 Rxe7+- 29. cb Nc4 30. Qh4 Rf7 31. Qd4 Kg8! 32. Bf4 Rc5 33. Bf3 Rxb5 34. h3 Nxe5 35. Ba8 Rf8 36. Bxe5 Nxe5 37. Qxa7 Bd5 38. Bxd5+ Rxd5 39. Qe3 Ra5 40. Qe2 Rfa8 41. a4 Nf7 42. h4 Rxa4, and White resigned.

Translated by Jim Marfia

Copyright 2001 Mark Dvoretzky. All rights reserved.



[\[The Chess Cafe Home Page\]](#) [\[Book Reviews\]](#) [\[Bulletin Board\]](#) [\[Columnists\]](#)

[\[Endgame Studies\]](#) [\[The Skittles Room\]](#) [\[Archives\]](#)

[\[Links\]](#) [\[Online Bookstore\]](#) [\[About The Chess Cafe\]](#) [\[Contact Us\]](#)

Copyright 2001 CyberCafes, LLC. All Rights Reserved.

"**The Chess Cafe®**" is a registered trademark of Russell Enterprises, Inc.